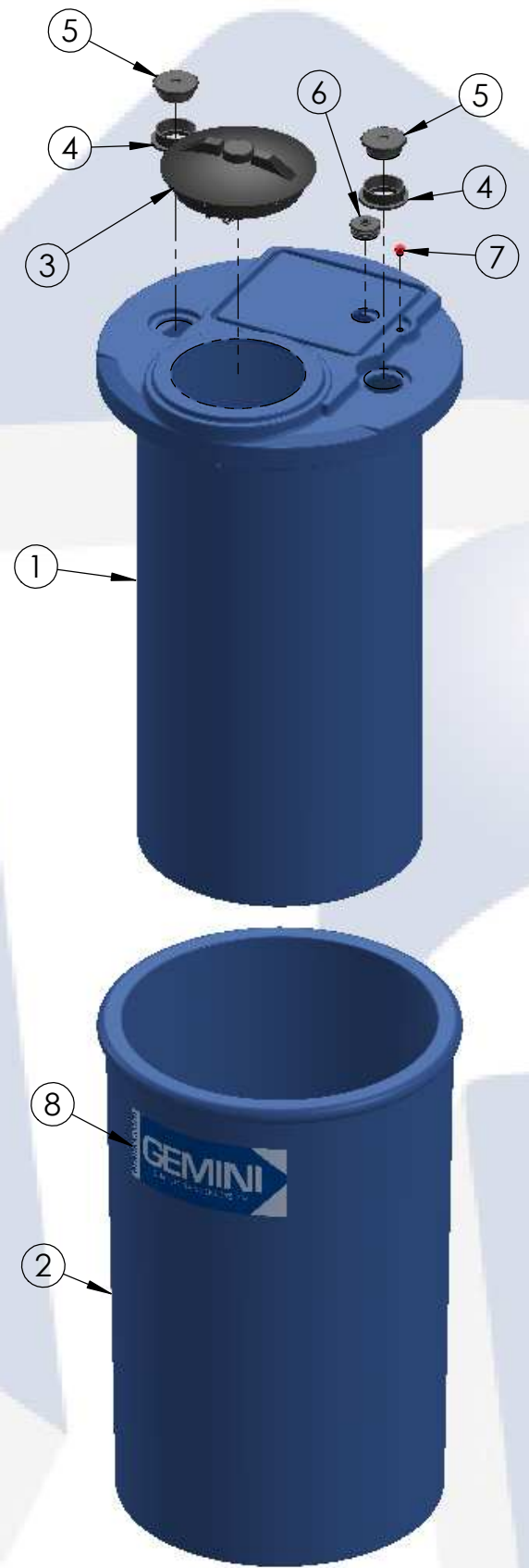


8 7 6 5 4 3 2 1

40 GALLON GEMINI	PART NUMBER	
	BLUE	NATURAL
STANDARD (1.5 SPG)	01-14874	01-1076
HD (1.9 SPG)	01-29774	01-29765



**ISO VIEW
(ASSEMBLED)**



**TRIMETRIC VIEW
(EXPLODED)**

TOP LEVEL ASSEMBLY BOM

ITEM NO.	DESCRIPTION	QTY.
1	40G GEMINI PRIMARY TANK (FLAT TOP)	1
2	40G GEMINI SECONDARY TANK (FLAT TOP)	1
3	8" TWIST LID ASSEMBLY	1
4	2" FNPT SPIN WELD FITTING, PE, BLACK	2
5	2" MPT PLUG, PE, BLACK	2
6	2" CAPLUG / GROMMET SUB-ASSY	1
7	RED CAPLUG / O-RING SUB-ASSY	1
8	LOGO	1

- NOTES:**
- CAPACITY: 40 GAL. NOMINAL
 - APPROXIMATE WEIGHT: 43 LBS
 - TANK MATERIAL: LLDPE W/ UV INHIBITOR
 - SERVICE PRESSURE: ATMOSPHERIC

PROPRIETARY AND CONFIDENTIAL
 THE INFORMATION CONTAINED IN THIS DRAWING IS THE SOLE PROPERTY OF PEABODY ENGINEERING. ANY REPRODUCTION IN PART OR AS A WHOLE WITHOUT THE WRITTEN PERMISSION OF PEABODY ENGINEERING IS PROHIBITED.

UNLESS OTHERWISE SPECIFIED:		NAME	DATE
DIMENSIONS ARE IN INCHES TOLERANCES: ±1/4" ANGULAR: ±.5° ONE PLACE DECIMAL: ±.25 TWO PLACE DECIMAL: ±.125 THREE PLACE DECIMAL: ±.063		DRAWN MSM	11/25/13
TANK MATERIAL: LLDPE	INNER TANK S/N:	CHECKED	
OUTER TANK S/N:	CUSTOMER PO#	ENG APPR.	
DO NOT SCALE DRAWING		MFG APPR.	
		Q.A.	
		ALTERNATIVE VERSIONS	
		MATERIALS: XLPE, PPL, PVDF COLORS: NATURAL, BLUE OR BLACK AVAILABLE WITH FRP WRAP	
		CALL FOR PART NUMBERS	

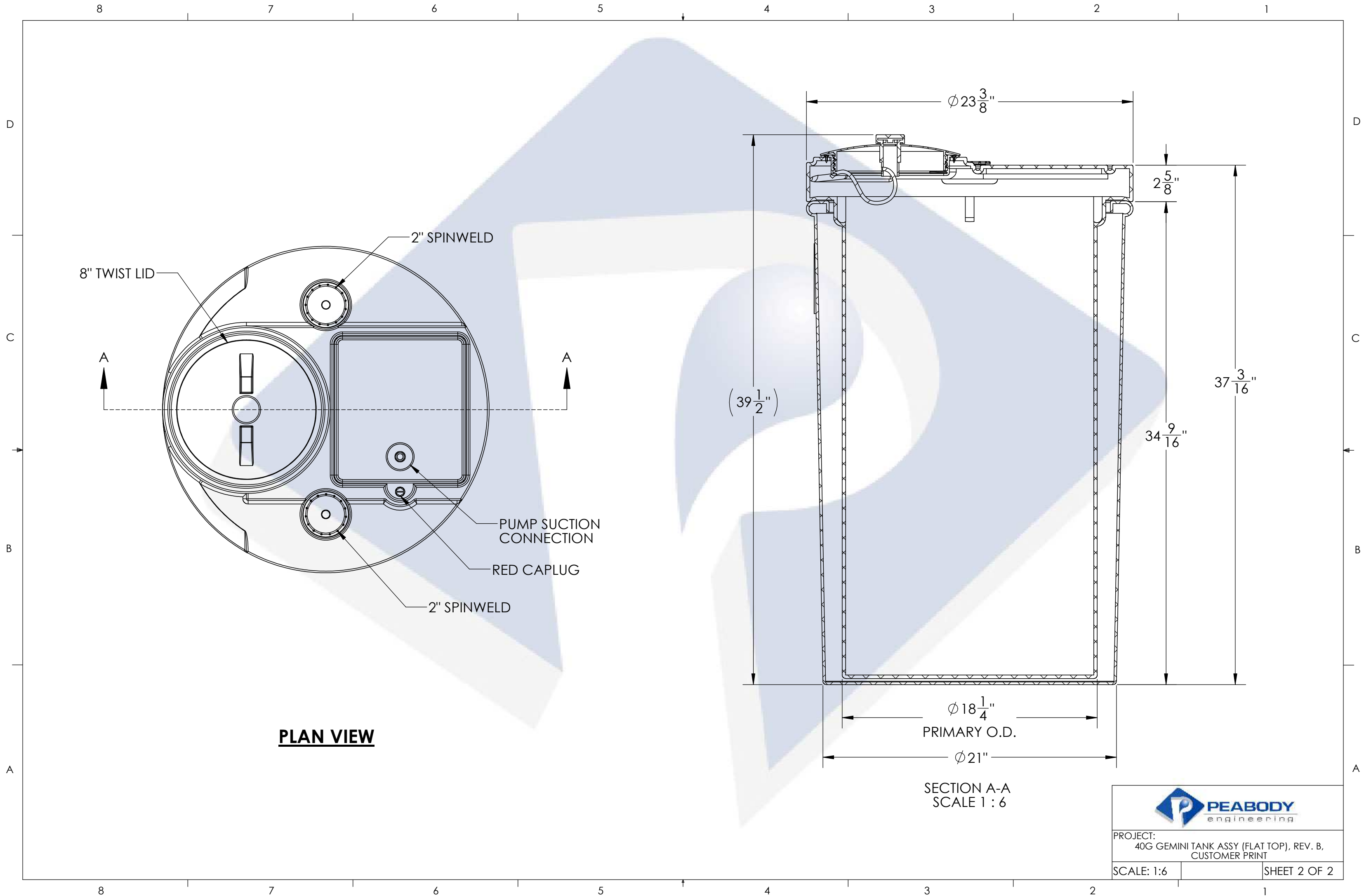


PROJECT: 40 GALLON GEMINI (FLAT TOP) ASSEMBLY		
CUSTOMER: PEABODY STANDARD		
SITE/LOCATION: -		
DRAWING#: SEE TABLE		
SIZE B	DESC. PEABODY 40 GALLON FLAT TOP GEMINI	REV. B
SCALE: 1:12		SHEET 1 OF 2

D
C
B
A

D
C
B
A

8 7 6 5 4 3 2 1



PLAN VIEW

SECTION A-A
SCALE 1 : 6



PROJECT:
40G GEMINI TANK ASSY (FLAT TOP), REV. B,
CUSTOMER PRINT

SCALE: 1:6

SHEET 2 OF 2