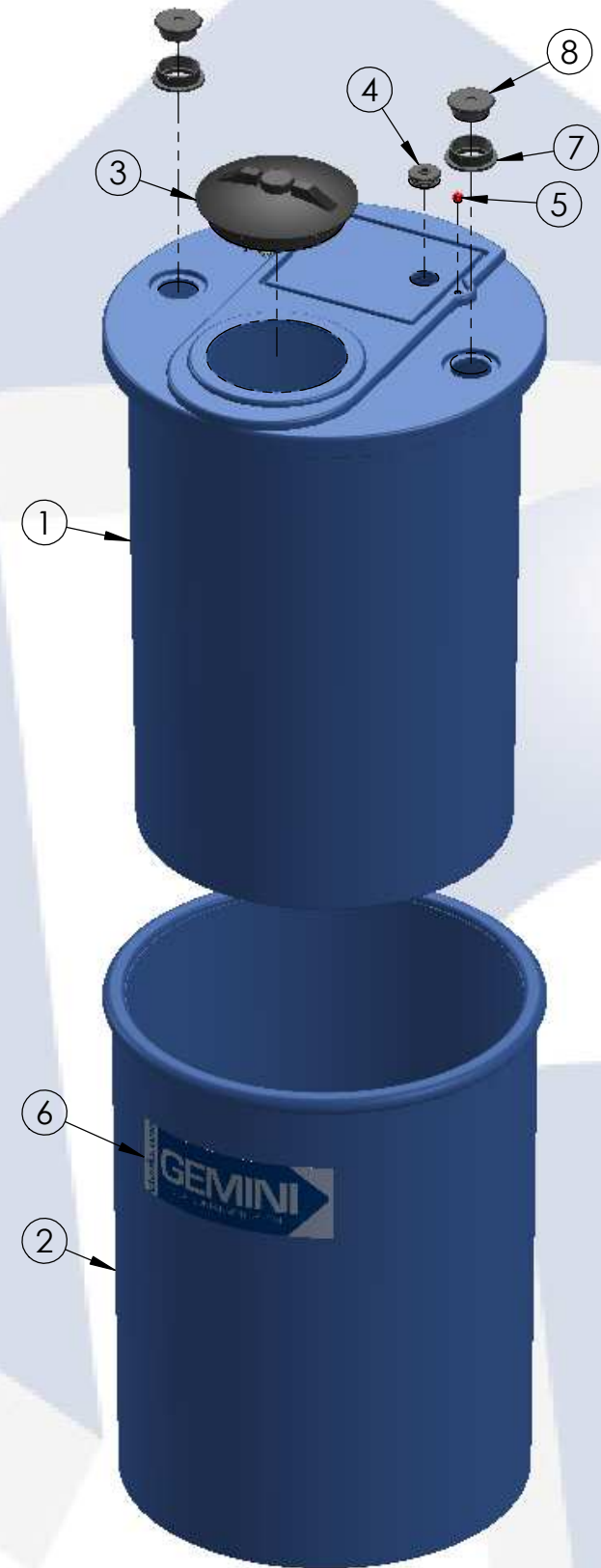


8 7 6 5 4 3 2 1

62 GALLON GEMINI	PART NUMBER	
	BLUE	NATURAL
STANDARD (1.5 SPG)	01-14877	01-1077
HD (1.9 SPG)	01-29776	01-29767



**ISO VIEW  
(ASSEMBLED)**



**TRIMETRIC VIEW  
(EXPLODED)**

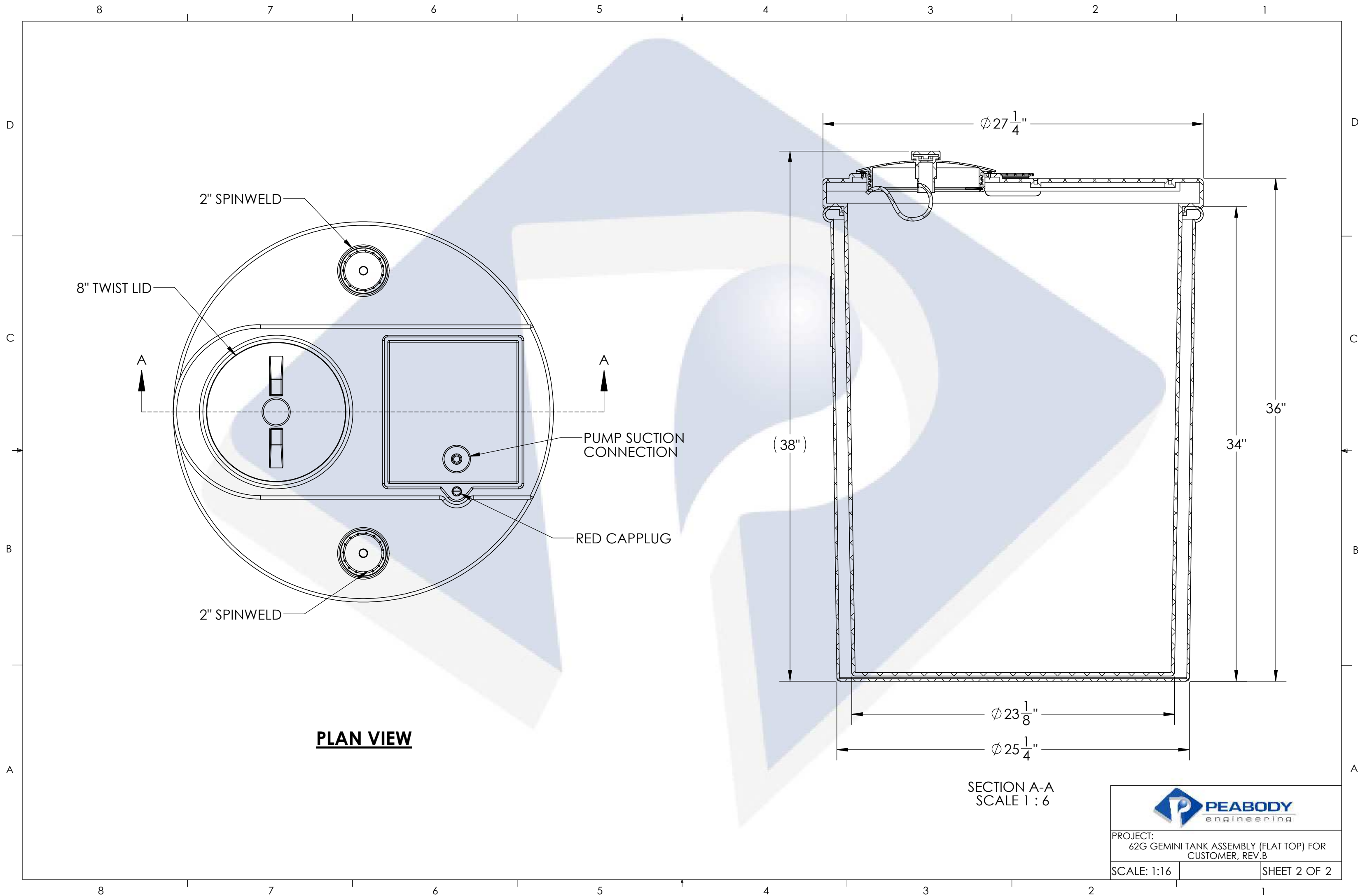
ITEM NO.	DESCRIPTION	QTY.
1	62G GEMINI PRIMARY TANK (FLAT TOP)	1
2	62G GEMINI SECONDARY TANK (FLAT TOP)	1
3	8" TWIST LID ASSEMBLY	1
4	2" CAPLUG / GROMMET SUB-ASSY	1
5	RED CAPLUG / O-RING SUB-ASSY	1
6	LOGO	1
7	2" FNPT SPIN WELD FITTING, PE, BLACK	2
8	2" THREADED PLUG, PE	2

- NOTES:**
- CAPACITY: 62 GAL. NOMINAL
  - APPROXIMATE WEIGHT: 57 LBS
  - TANK MATERIAL: LLDPE W/ UV INHIBITOR
  - SERVICE PRESSURE: ATMOSPHERIC

**PROPRIETARY AND CONFIDENTIAL**  
 THE INFORMATION CONTAINED IN THIS DRAWING IS THE SOLE PROPERTY OF PEABODY ENGINEERING. ANY REPRODUCTION IN PART OR AS A WHOLE WITHOUT THE WRITTEN PERMISSION OF PEABODY ENGINEERING IS PROHIBITED.

UNLESS OTHERWISE SPECIFIED:		NAME	DATE	
DIMENSIONS ARE IN INCHES TOLERANCES: ±1/4" ANGULAR: ±.5° ONE PLACE DECIMAL: ±.25 TWO PLACE DECIMAL: ±.125 THREE PLACE DECIMAL: ±.063		DRAWN	MSM 11/25/13	
TANK MATERIAL:	LLDPE	CHECKED		PROJECT: <b>62 GALLON GEMINI (FLAT TOP) ASSEMBLY</b>
INNER TANK S/N:		ENG APPR.		CUSTOMER: <b>PEABODY STANDARD</b>
OUTER TANK S/N:		MFG APPR.		SITE/LOCATION: -
CUSTOMER PO#		Q.A.		DRAWING#: <b>SEE TABLE</b>
DO NOT SCALE DRAWING		<b>ALTERNATIVE VERSIONS</b>		SIZE <b>B</b>   DESC. <b>PEABODY 62 GALLON FLAT TOP GEMINI</b>   REV. <b>B</b>
		MATERIALS: XLPE, PPL, PVDF COLORS: NATURAL, BLUE OR BLACK AVAILABLE WITH FRP WRAP		SCALE: 1:16   SHEET 1 OF 2
		CALL FOR PART NUMBERS		

8 7 6 5 4 3 2 1



**PLAN VIEW**

SECTION A-A  
SCALE 1 : 6



PROJECT:  
62G GEMINI TANK ASSEMBLY (FLAT TOP) FOR  
CUSTOMER, REV.B

SCALE: 1:16

SHEET 2 OF 2