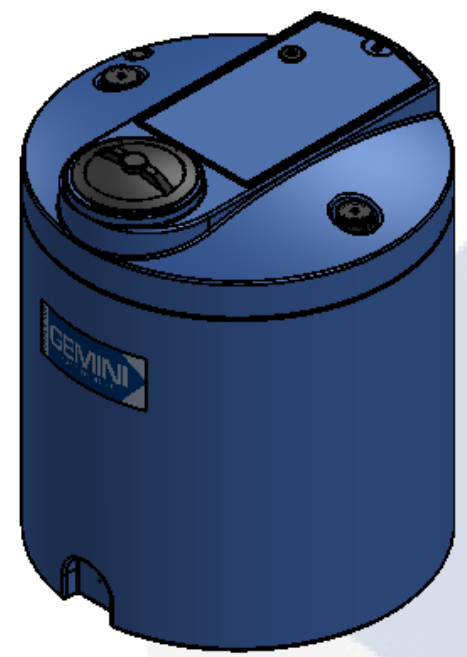
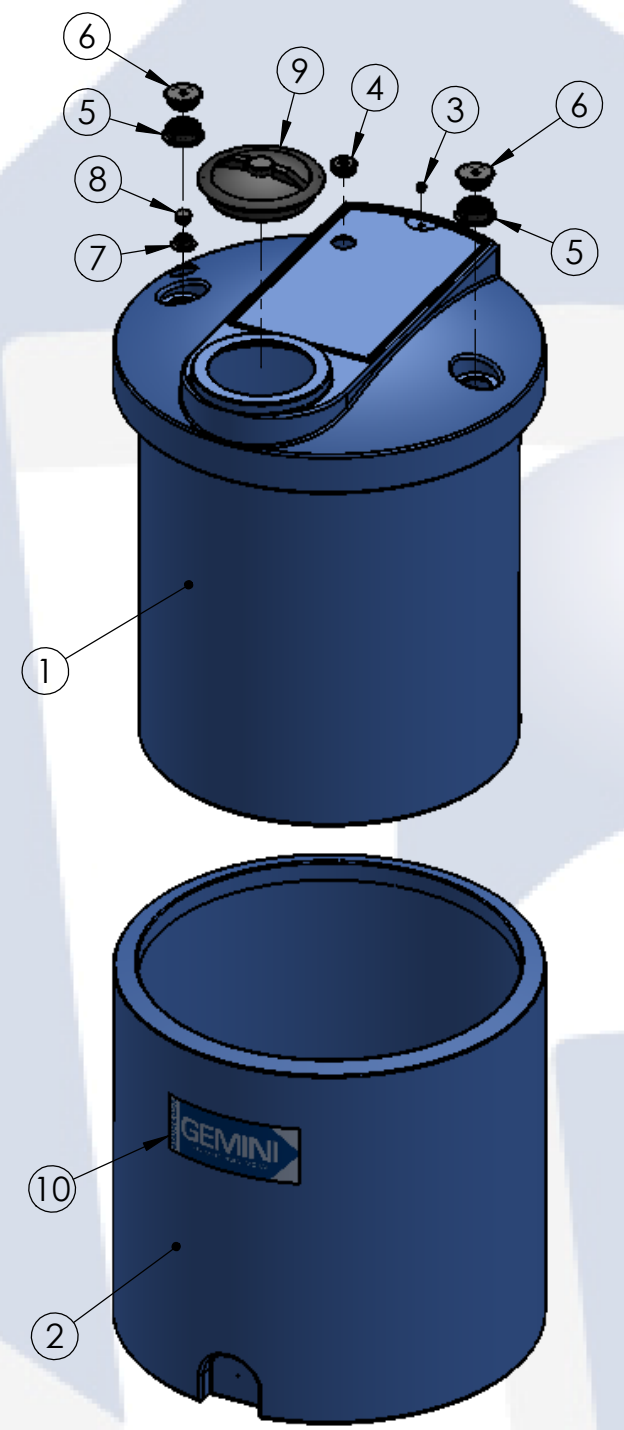


90 GALLON GEMINI	PART NUMBER	
	BLUE	NATURAL
STANDARD (1.5 SPG)	01-30294	01-30295
HD (1.9 SPG)	01-30296	01-30297



**ISO VIEW
(ASSEMBLED)**



**TRIMETRIC VIEW
(EXPLODED)**

TOP LEVEL ASSEMBLY BOM		
ITEM NO.	DESCRIPTION	QTY.
1	90G GEMINI PRIMARY TANK	1
2	90G GEMINI SECONDARY TANK	1
3	RED CAPLUG / O-RING SUB-ASSY	1
4	2" CAPLUG / GROMMET SUB-ASSY	1
5	2" FNPT SPIN WELD FITTING, PE	2
6	2" THREADED PLUG, PE	2
7	3/4" FNPT SPIN WELD FITTING, PE	1
8	3/4" THREADED PLUG, PE	1
9	8" TWIST LID ASSEMBLY	1
10	LOGO	1

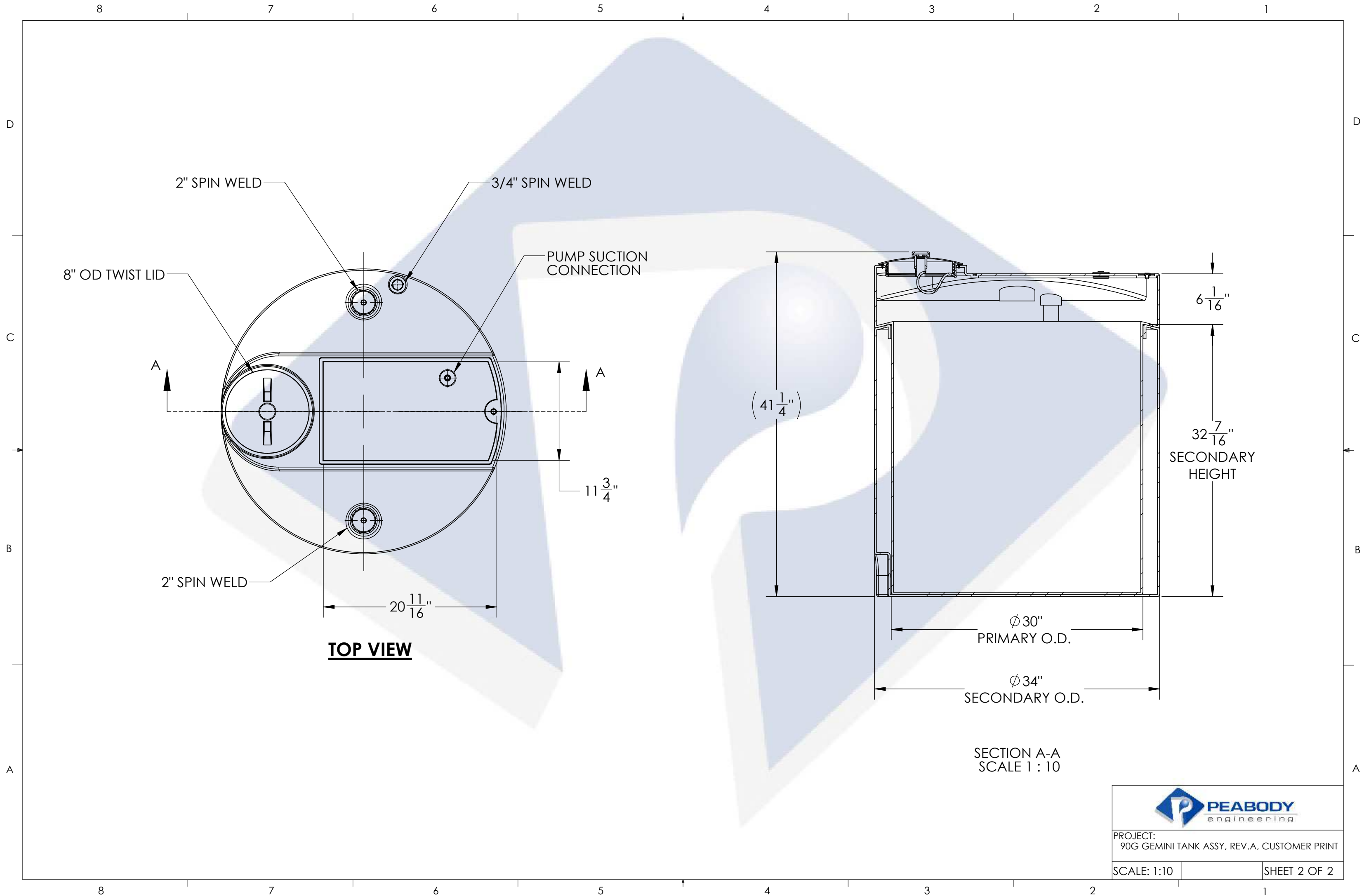
- NOTES:**
- CAPACITY: 90 GAL. NOMINAL
 - APPROXIMATE WEIGHT: 75 LBS
 - TANK MATERIAL: LLDPE W/ UV INHIBITOR
 - SERVICE PRESSURE: ATMOSPHERIC

PROPRIETARY AND CONFIDENTIAL
 THE INFORMATION CONTAINED IN THIS DRAWING IS THE SOLE PROPERTY OF PEABODY ENGINEERING. ANY REPRODUCTION IN PART OR AS A WHOLE WITHOUT THE WRITTEN PERMISSION OF PEABODY ENGINEERING IS PROHIBITED.

UNLESS OTHERWISE SPECIFIED:		NAME	DATE
DIMENSIONS ARE IN INCHES TOLERANCES: ±1/4" ANGULAR: ±.5° ONE PLACE DECIMAL: ±.25 TWO PLACE DECIMAL: ±.125 THREE PLACE DECIMAL: ±.063	DRAWN	MSM	11/25/13
TANK MATERIAL: LLDPE	CHECKED		
INNER TANK S/N:	ENG APPR.		
OUTER TANK S/N:	MFG APPR.		
CUSTOMER PO#	Q.A.		
DO NOT SCALE DRAWING	ALTERNATIVE VERSIONS		
	MATERIALS: XLPE, PPL, PVDF COLORS: NATURAL, BLUE OR BLACK AVAILABLE WITH FRP WRAP		
	CALL FOR PART NUMBERS		



PROJECT: 90 GALLON GEMINI TANK ASSEMBLY		
CUSTOMER: PEABODY STANDARD		
SITE/LOCATION: -		
DRAWING#: SEE TABLE		
SIZE	DESC.	REV.
B	PEABODY 90 GALLON GEMINI	A
SCALE: 1:16		SHEET 1 OF 2



2" SPIN WELD

3/4" SPIN WELD

8" OD TWIST LID

PUMP SUCTION CONNECTION

2" SPIN WELD

20 $\frac{11}{16}$ "

11 $\frac{3}{4}$ "

(41 $\frac{1}{4}$ "

TOP VIEW

6 $\frac{1}{16}$ "

32 $\frac{7}{16}$ "
SECONDARY HEIGHT

Ø 30"
PRIMARY O.D.

Ø 34"
SECONDARY O.D.

SECTION A-A
SCALE 1 : 10



PROJECT:
90G GEMINI TANK ASSY, REV.A, CUSTOMER PRINT

SCALE: 1:10

SHEET 2 OF 2