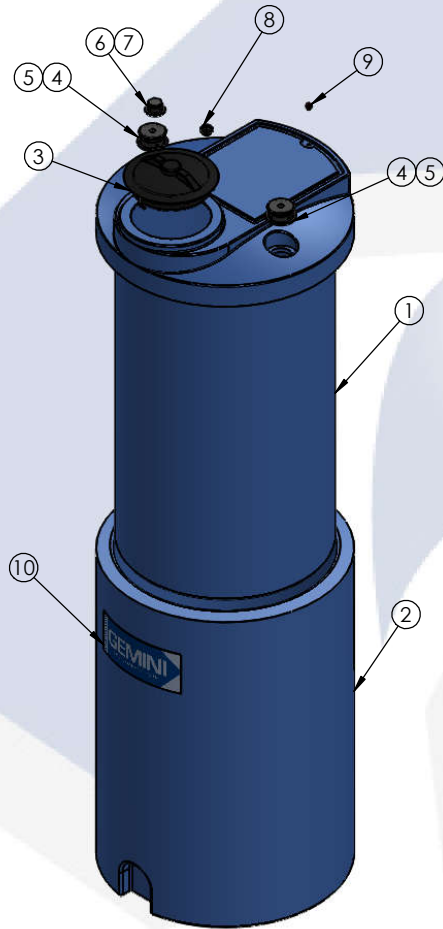


8 7 6 5 4 3 2 1

65 GALLON GEMINI	PART NUMBER	
	BLUE	NATURAL
STANDARD (1.5 SPG)	01-29920	01-29921
HD (1.9 SPG)	01-29922	01-29923



**ISOMETRIC VIEW
(ASSEMBLED)**



**ISOMETRIC VIEW
(EXPLODED)**

ALTERNATE CONFIGURATION TO MEET NSF/ANSI STANDARD 61 AVAILABLE

TOP LEVEL ASSEMBLY		
ITEM NO.	DESCRIPTION	QTY.
1	65G GEMINI PRIMARY TANK	1
2	65G GEMINI SECONDARY TANK	1
3	Ø10" OD / 8" ID TWIST LID ASSY	1
4	Ø2" FNPT SPIN WELD FITTING, PE, BLACK	2
5	Ø2" MPT PLUG, PE, BLACK	2
6	Ø1" FNPT SPIN WELD FITTING, PE, BLACK	1
7	Ø1" MPT PLUG, PE, BLACK	1
8	Ø1-1/4" CAPLUG / GROMMET SUB-ASSY	1
9	RED CAPLUG / O-RING SUB-ASSY	1
10	MOLD IN GRAPHIC	1

- NOTES:**
1. CAPACITY: 65 GAL. NOMINAL
 2. APPROXIMATE WEIGHT: 63 LBS
 3. TANK MATERIAL: LLDPE W/ UV INHIBITOR
 4. GASKETS: EPDM
 5. SERVICE PRESSURE: ATMOSPHERIC

PROPRIETARY AND CONFIDENTIAL
 THE INFORMATION CONTAINED IN THIS DRAWING IS THE SOLE PROPERTY OF PEABODY ENGINEERING. ANY REPRODUCTION IN PART OR AS A WHOLE WITHOUT THE WRITTEN PERMISSION OF PEABODY ENGINEERING IS PROHIBITED.

UNLESS OTHERWISE SPECIFIED:		NAME	DATE	
DIMENSIONS ARE IN INCHES TOLERANCES: ±1/4" ANGULAR: ± 5° ONE PLACE DECIMAL: ± .25 TWO PLACE DECIMAL: ± .125 THREE PLACE DECIMAL: ± .063		DRAWN	MHS 2/28/17	
TANK MATERIAL: LLDPE		CHECKED		CUSTOMER: PEABODY STANDARD
INNER TANK S/N:		ENG APPR.		SITE/LOCATION: -
OUTER TANK S/N:		MFG APPR.		DRAWING#: SEE TABLE
CUSTOMER PO#		Q.A.		SIZE B
DO NOT SCALE DRAWING		ALTERNATIVE VERSIONS MATERIALS: XLPE, PPL, PVDF COLORS: NATURAL, BLUE OR BLACK AVAILABLE WITH FRP WRAP		DESC: 65 GALLON GEMINI TANK, Ø27" x 47"
CALL FOR PART NUMBERS		SCALE: 1:13		REV. D
		SHEET 1 OF 2		

8 7 6 5 4 3 2 1

8 7 6 5 4 3 2 1

D

C

B

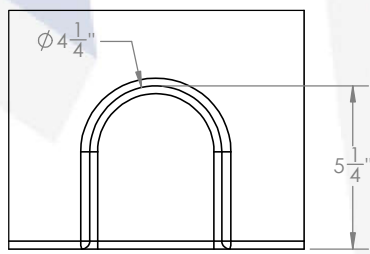
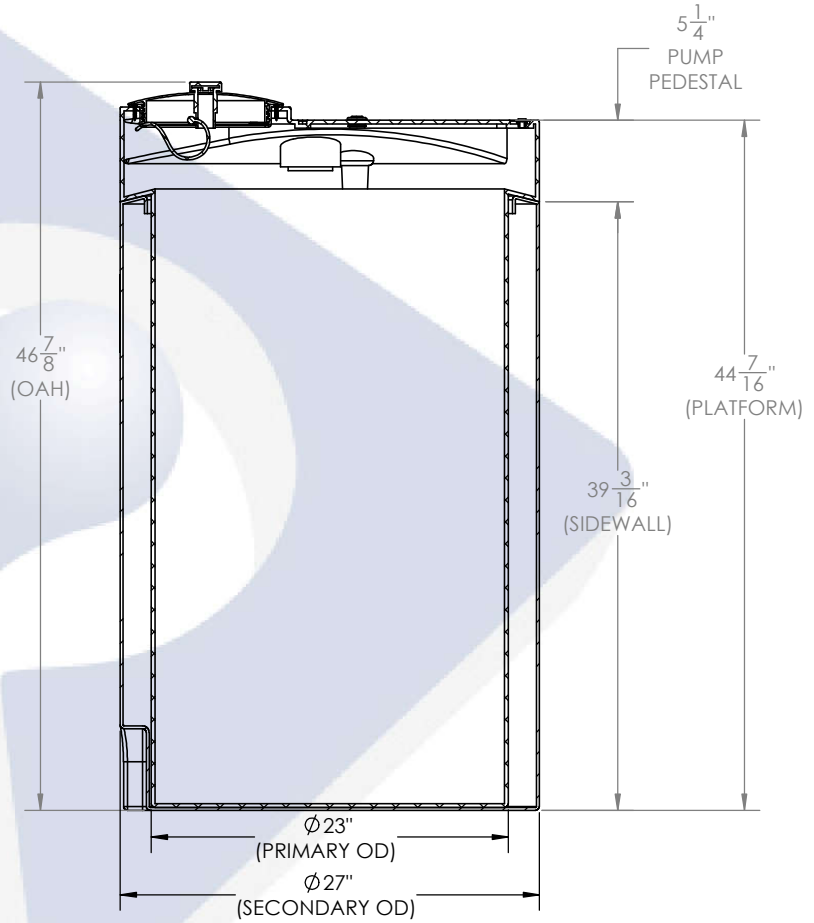
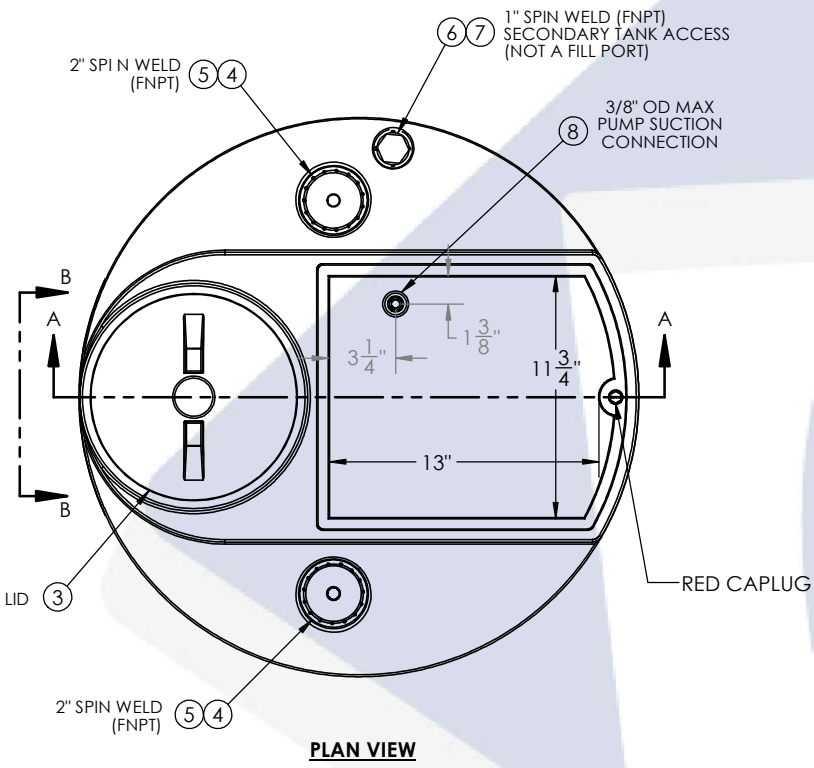
A

D

C

B

A



PROJECT: 65G Gemini, CUSTOMER Print

SCALE: 1:6

SHEET 2 OF 2

8 7 6 5 4 3 2 1