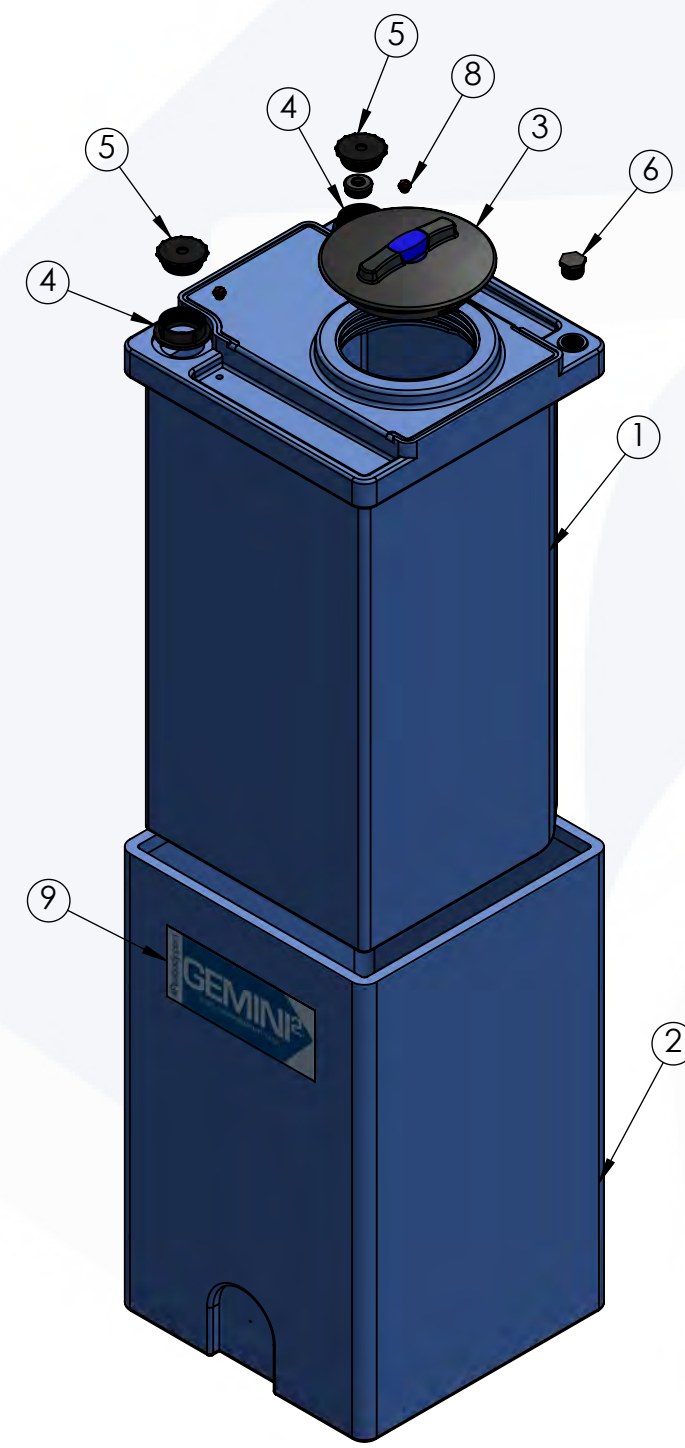


40 GALLON GEMINI ²	PART NUMBER	
	BLUE	NATURAL
STANDARD (1.5 SPG)	01-29655	01-29659
HD (1.9 SPG)	01-30060	01-30064

MOLDED-IN THREADS



ISOMETRIC VIEW (ASSEMBLED)




ISOMETRIC VIEW (EXPLODED)

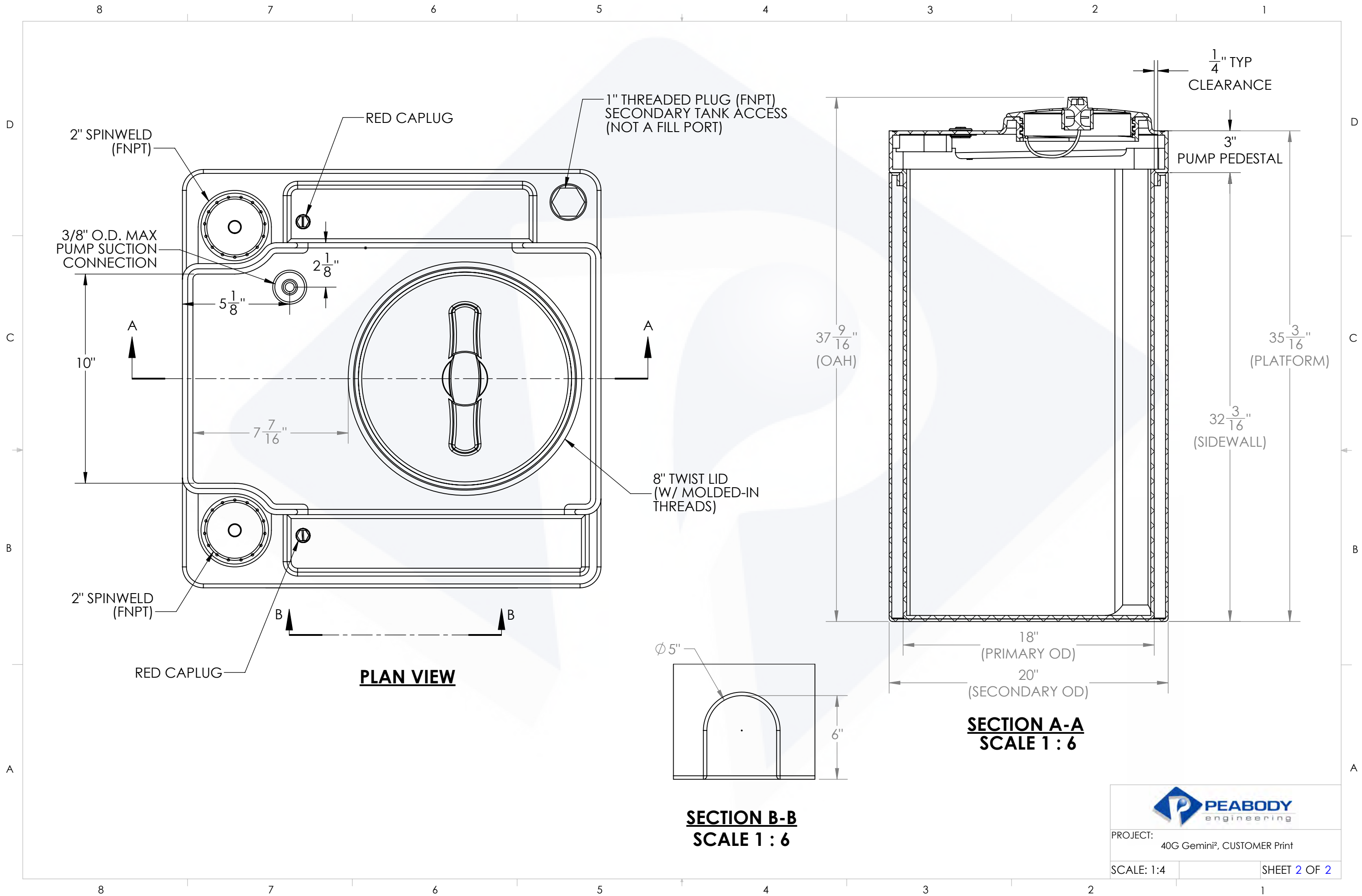
ALTERNATE CONFIGURATION TO MEET NSF/ANSI STANDARD 61 AVAILABLE

TOP LEVEL ASSEMBLY		
ITEM NO.	DESCRIPTION	QTY.
1	40G GEMINI ² , PRIMARY TANK	1
2	40G GEMINI ² , SECONDARY TANK	1
3	Ø8" TWIST LID ASSEMBLY	1
4	Ø2" FNPT SPIN WELD FITTING, PE	2
5	Ø2" MPT PLUG, PE, BLACK	2
6	Ø1" MPT PLUG, PE, BLACK	1
7	Ø1-5/8" CAPLUG / GROMMET ASSY	1
8	RED CAPLUG / O-RING SUB-ASSY	2
9	GEMINI ² MOLD IN LOGO	1

- NOTES:**
- CAPACITY: 40 GAL. NOMINAL
 - APPROXIMATE WEIGHT: 47 LBS
 - TANK MATERIAL: LLDPE W/ UV INHIBITOR
 - GASKETS: EPDM
 - SERVICE PRESSURE: ATMOSPHERIC

PROPRIETARY AND CONFIDENTIAL
 THE INFORMATION CONTAINED IN THIS DRAWING IS THE SOLE PROPERTY OF PEABODY ENGINEERING. ANY REPRODUCTION IN PART OR AS A WHOLE WITHOUT THE WRITTEN PERMISSION OF PEABODY ENGINEERING IS PROHIBITED.

UNLESS OTHERWISE SPECIFIED:		NAME	DATE	
DIMENSIONS ARE IN INCHES TOLERANCES: ±1/4" ANGULAR: ± .5° ONE PLACE DECIMAL: ± .25 TWO PLACE DECIMAL: ± .125 THREE PLACE DECIMAL: ± .063		DRAWN	MHS 2/24/17	
TANK MATERIAL: LLDPE		CHECKED		CUSTOMER: PEABODY STANDARD
INNER TANK S/N:		ENG APPR.		SITE/LOCATION: -
OUTER TANK S/N:		MFG APPR.		DRAWING#: SEE TABLE
CUSTOMER PO#		Q.A.		SIZE B
DO NOT SCALE DRAWING		ALTERNATIVE VERSIONS MATERIALS: XLPE, PPL, PVDF COLORS: NATURAL, BLUE OR BLACK AVAILABLE WITH FRP WRAP		DESC. 40G GALLON GEMINI ² TANK, 20" x 20" x 37-1/4" REV. K
		CALL FOR PART NUMBERS		SCALE: 1:11 SHEET 1 OF 2



PROJECT: 40G Gemini², CUSTOMER Print

SCALE: 1:4

SHEET 2 OF 2